



Dental Lab

CBCT GUIDED SURGERY

Protocol



QUESTIONS?

TC Dental Laboratory

1000 NE 122nd Ave,
Portland, OR 97230

1-800-926-5412

info@tcdentallab.com

www.tcdentallab.com



LOCATIONS

San Diego, California
6440 Lusk Blvd d109,
San Diego, CA 92121

Seattle, Washington
907 N 130th St,
Seattle, WA 98133

Portland, Oregon
1000 NE 122nd Ave,
Portland, OR 97230

PREP FOR THE PATIENT



Maxillary



Mandibular



Upper & Lower Separated



Scan Appliance Must Be Seated

Cotton rolls to separate the buccal and lingual. The patient **MUST** bite down the cotton rolls during the scan.

If the patient has scan appliance, the scan appliance must be fully seated.

PLANNING

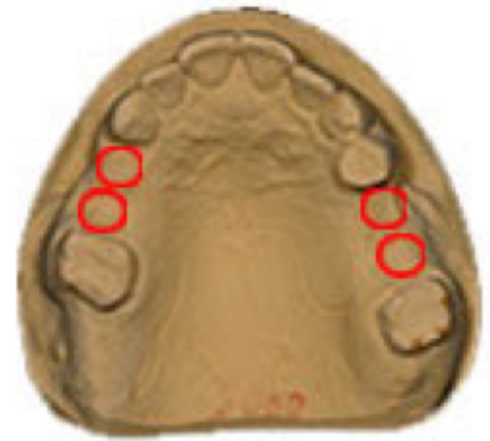
1-4

IMPLANTS

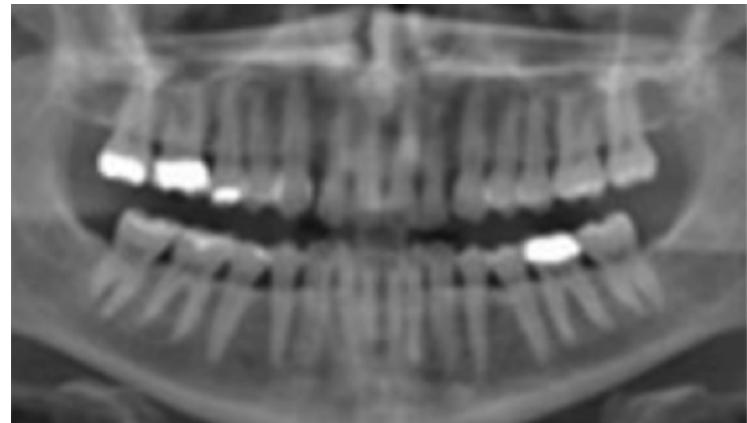
What to send to the lab:

- Maxillary and mandibular master cast or STL files and a bite registration.
- DICOM (Multi File, RAW, uncompressed - a folder with 80 - 300 files with extension .dcm)

** when including immediate restorations, opposing and bite are required*



Partially Edentulous



less than 50% metal base

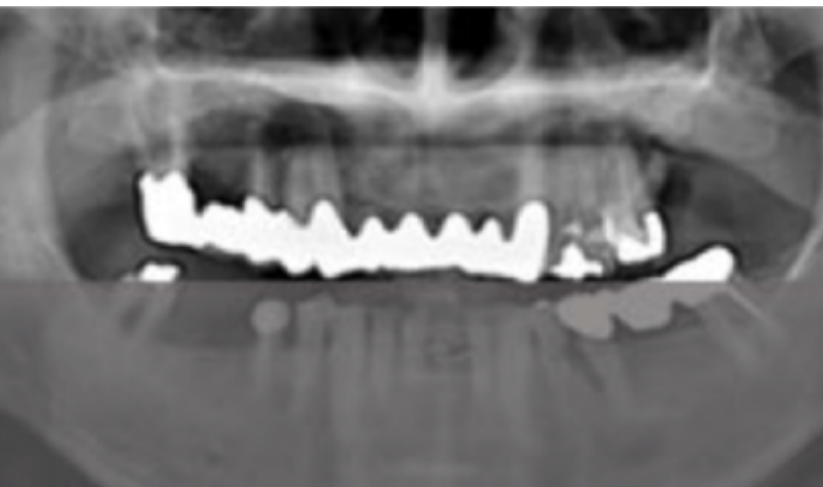
Scan appliance are required:

- Maxillary and mandibular master cast, or STL files and a bite registration (*if restoring anterior teeth or 3-4 adjacent implants, send study model if available*)

Doctor receives Scan Appliance and captures 2 CT scans (Dual Scan Technique)

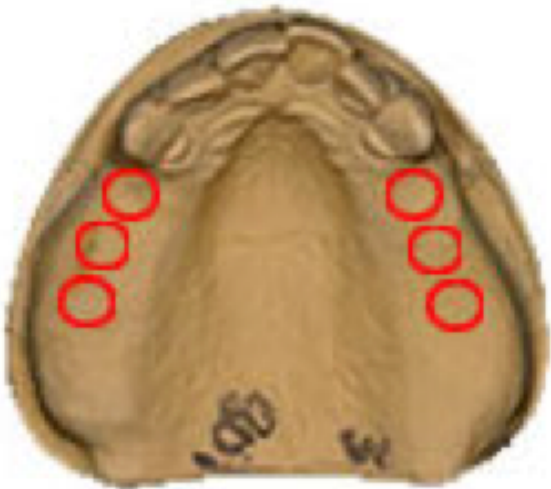
Scan 1 - Scan the Appliance alone sitting on 2 cotton rolls

Scan 2 - Scan the patient with Scan Appliance seated completely with no rock, biting on cotton rolls



More than 50% metal base

RESTORING 5 IMPLANTS OR MORE IN EDENTULOUS AREAS



Partially Edentulous
Planning 5+ implants

Scan Appliance are required:

- Maxillary and mandibular master cast, or STL files and a bite registration (*if restoring anterior teeth or 3-4 adjacent implants, send study model if available*)

Doctor receives Scan Appliance and captures 2 CT scans (*Dual Scan Technique*)

Scan 1 - Scan the Appliance alone sitting on 2 cotton rolls *

Scan 2 - Scan the patient with Scan Appliance seated completely with no rock, biting on cotton rolls

EDENTULOUS ARCH(S)



Edentulous Arch

Denture must be prep for scan:

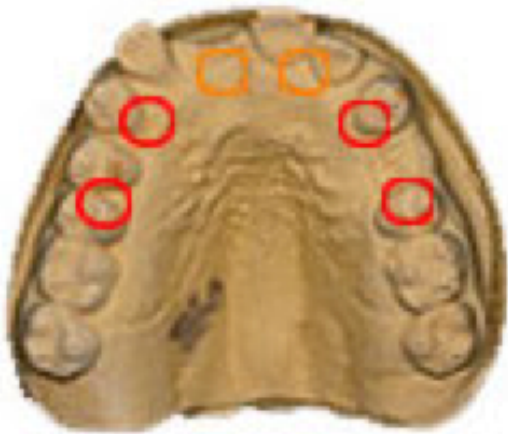
- **Option 1** - Place 6 Gutta Percha or composite points on the tongue side of the denture randomly in the pink area using #5 or similar bur to create a 1mm dimple.
- **Option 2** - Call and order Radiopaque Markers from TC. Place six in sticky wax on the tongue side randomly.

Steps: Dual Scan Technique

Scan 1 - Scan the Appliance alone sitting on 2 cotton rolls *

Scan 2 - Scan the patient with Scan Appliance seated completely with no rock, biting on cotton rolls

ALL-ON-4 WORK UP PROTOCOL



Full extraction & placement

Steps:

1.
 - A. Base place and wax rim try-in to make sure the correct bite and Vertical Dimension. Teeth set-up for try-in.
 - B. Scan(CT) the patient with wearing the denture set-up including radio graphic guided.
 - C. Scan (CT) the denture set-up by it self. Upload DICOM / Photograph (*full face, full natural smile*)
 - D. Send master casts, bite registration (CO and/or CR), and/or digital impressions, study casts
 - E. Send MSGA – Master Surgical Guide Agreement with first case (required to begin) Step 2
2. Schedule meeting with TC on line for implant and guide planning (allow 4 days after receiving all materials)
3. Sign and return the TPA Treatment Plan Report – via fax or scan and email.
4. Receive the GSI Surgical Information Form to order parts and review surgery – via email.
5. Receive guide (*TC will ship within 10 days of the signed TPA Treatment Plan Report*)